

Connected

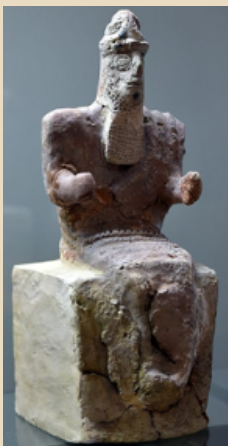
Sunday 8th February 2026

2nd Sunday Before Lent

Sermon Snippets

Christ Church

Isaiah 46: 1-7



This week in Isaiah we're back in the world of Babylon where their powerful 'gods' were paraded at the new year festival. Given Babylon was a strong military nation, many thought their 'gods' were responsible for their victories. Isaiah makes them face reality – these 'gods' have to be carried... but the living God of Israel carries them in his care!

We'll be thinking about any idols we may have today, contrasting them with the living God of our faith.

Emmanuel

Romans 8: 18-25 + Matthew 6: 25-34

The world is full of real, overwhelming suffering and injustice - Jesus' "do not worry" sounds hard, even offensive, in that context. Paul acknowledges pain but calls people to patient and active hope. Christian hope rests in God's redeeming love shown in Jesus.

Worry paralyses; concern motivates loving, redemptive action and we are called to live out that hope through practical love today.



Lent Course At Emmanuel

Julie and John Birkett will be leading a Lent Course at Emmanuel called 'Growing Good'. The course is designed to help churches explore the connection between social action, discipleship, and growth. Together we will reflect on scripture, learn more about our local community, discover our gifts, and find inspiration for putting ideas into action. Each week explores a different theme, so it's not a problem if you can't make every Sunday of Lent.

It will run from 12:15pm-1:45pm each Sunday for seven weeks after church, starting 22nd February. Don't forget to bring your lunch!

To find out more, speak to Julie or John, pick up a flyer (available at the back of both churches), or visit the Growing Good website at <https://growing-good.org.uk/>

This course is part of our continued seeking of God's direction for this season in the life of our church, particularly as we press into plans to renew our worship space and think about how our building shapes our ministry, so it is specific to Emmanuel. However, if anyone from Christ Church would like to come along, we would love to have you with us. And, obviously, all the principles can be applied to both churches.



What's On This Week

Sunday 8th February

Families Together at 12noon in The Spire Centre
Deaf Church at 3pm at Emmanuel

Monday 9th February

Ladies Together at 2:30pm in The Spire Centre

Tuesday 10th February

Parish Prayers at 9:30am at Emmanuel
The Beacon at 12noon at Emmanuel

Wednesday 11th February

Seedlings Toddler Group at 10:15am at Christ Church
Alpha Course at 7pm in The Spire Centre
(for those who have signed up)

Thursday 12th February

Craft & Chat at 2:30pm in The Spire Centre
Welcome Group at 2:30pm at Emmanuel

Saturday 14th February

Repair Cafe from 10am-12:30pm at Christ Church

Notices

Church Office Closed

Please note that the Church Office will be closed
from Monday 23rd February until
Tuesday 3rd March inclusive.

Verse For The Week

“ Even to your old age and grey hairs I am he, I am he
who will sustain you. I have made you and I will carry
you; I will sustain you and I will rescue you. ‘With
whom will you compare me or count me equal? To
whom will you liken me that we may be compared?’ ”

Isaiah 46: 4-5

Watch the Morning Service

at www.ccwsm.org.uk

Go to the 'Church Life' menu and click
on the 'Sunday Services' page

Contact Details

Rev. Tom Webber (Day Off - Tuesday)
t: (01934) 709343
e: revtom@ccwsm.org.uk

Church Office (09:30-12:30 Mon-Fri)
t: (01934) 641016
e: office@ccwsm.org.uk
w: www.ccwsm.org.uk

Prayer Pointers

*Be very careful, then, how you live - not
as unwise but as wise, making the most of
every opportunity... (Ephesians 5: 15-16)*

Church Family: Please take time to reflect
on your week - where you have gone,
people you have met, conversations had.
We lift up to you, Lord, our loved ones -
those in our Church family who are lonely,
sick, suffering, lost, hurting, or bereaved.
We give grateful thanks for our PCC
members and churchwardens and hold them
up to our Lord - for the time they take
out of every day life, for decisions made,
and the steering of your church through
every day issues, from finance, to the
garden, and the general wellbeing of our
churches.

The Local Area: We think of the child
poverty in Weston area - for the impact
on stability in their lives, for the right
care for these children at school, and the
right policies to be in place.
We pray for our youth as personal hygiene
is becoming an issue. We pray for wisdom
and sensitivity for parents and for schools
as discussions take place.
Please pray for the CAP breakfast taking
place on the 26th February, and for the
good that may come from this meeting as
they consider the needs of the area and
resources available.

National Prayer: We pray for the natural
world as our landscapes and woodlands are
feeling the impact of exploitation over
generations. The wild animals have
decreased in population by 60% since the
1970s.

We continue to pray for our Prime Minister
and his Cabinet and for discussions made
with China - we ask that this is genuine
and respectful for both nations.

Global Prayer: We give praise for Kenya
and a well-recognised nuns' group who are
very active making eucharistic wafers and
vestments. They cannot cope with recent
demands as an explosion of worshippers is
taking place. A charity has stepped up to
the mark and offered help - praise the
Lord! We ask for continued blessing. Glory
to God.

Coffee after the Service...

Ambassadors Women's Group

The Ambassadors Women's Group is having a social breakfast on:

Saturday 21st February
9:30am at The Beefeater



Please do sign-up on the sheet at the back of Christ Church if you would like to attend.

Or, if you are at Emmanuel and would like to come along, please notify Kathy Hinchliffe or speak to Emma in the Church Office.

The Active Men enjoyed their darts evening last weekend....

Congratulations to Dave Milsom who was the Darts Champion on the day!



Jolyon Trickey is joining the Weston Hospice Men's March (10 miles) on 21st February, in memory of Frances...



To make it more of a challenge, before the walk, he also plans to first run the Weston ParkRun twice - officially at 9am and then re-running the course - a total of an additional 10k.

He would be glad of sponsorship &/or company in any part of this - do speak to Jolyon, or you can donate via this link:

www.justgiving.com/page/jolyon-trickey-2

Exploring Our Vision & Mission At Emmanuel

Following on from last week's article in Connected, please do continue to leave your thoughts and feedback in the box at the back of Emmanuel Church over the next few weeks. Or share them with the Wardens or any of the ministry team.



And, most importantly, continue to pray that we will know God's direction for what He is calling us to, as Emmanuel Church, in the years ahead.



12noon-1:30pm

Sunday 8th February

Please let Nicky know if you are coming:
familyministry@ccwsm.org.uk



If anyone has any spare mugs that they could donate to the Beacon please speak to Meg Hill or Emma in the Church Office.
Thank you!

REPAIR CAFE

The next Repair Café will be held on:
Saturday 14th February
from 10am-12:30pm
at Christ Church

More coffee anyone...?

Thank!
you!

Last Saturday the Diocese was praying for all those who clean and/or decorate our churches and church halls using the following prayer from the monthly Diocesan Prayer Calendar:

All seeing God, we thank you for those who serve you by cleaning and decorating our churches and church halls so that they are places of welcome for all who enter them. We give thanks for their faithful service. Amen

With thanks for all that you do.

christians
against
poverty

CAP

**Christians
Against
Poverty
Breakfast**

**Thursday 26th
February, 8am-9:15am
Wetherspoons,
Cabot Court Hotel**

See 25th January
edition of Connected
for more information.

To hear of the
challenges in Weston,
and how we can help,
please sign-up by
completing [this form](#)



LOCKING DEANERY

Presents



An Evening with Simon Guillebaud

Join us for an inspiring evening with Simon Guillebaud MBE — evangelist, author and founder of Great Lakes Outreach. Hear powerful stories of faith, courage and hope from over 20 years serving in some of the world's toughest places, and be encouraged in your own walk with Jesus.
(For more on Simon please check out <https://simonguillebaud.com/>)

At St Peters Church

Baytree Rd, Milton, Weston-super-Mare BS22 8HG
21st February at 7-8.30pm

Car Parking. At Christ Church

In addition to our previous notices about the Christ Church car park, could we also please ask that people **enter and exit the car park slowly and with care**. There are often children and parents (plus other pedestrians) around so please be especially mindful of that.



Men's Breakfast Christ Church

Saturday 28th February
8:30am-10am
COST: £5

Breakfast together followed by "An Interview With Keith Hallett".

If you would like to attend, please add your name to the sign-up sheet at Christ Church. Or, if you are at Emmanuel and would like to come along, please notify Paul Sodzi or contact the Church Office.



Open Doors

**World Watch List 2026
has been launched!**

PLEASE GO TO:

[HTTPS://WWW.OPENDOORSUK.
ORG/PERSECUTION/WORLD-
WATCH-LIST/](https://www.opendoorsuk.org/persecution/world-watch-list/)

THIS YEAR WE ARE FOCUSING ON THE THEME OF IMPOSSIBLE FAITH. HUMANLY SPEAKING, IN THE COUNTRIES AT THE TOP OF THE WORLD WATCH LIST, IT LOOKS ALMOST IMPOSSIBLE TO BE A CHRISTIAN. BUT WITH GOD, ALL THINGS ARE POSSIBLE (MATTHEW 19:26).

IF YOU ARE INTERESTED IN ANY FREE RESOURCES WHICH ARE DESIGNED TO HELP CHURCHES AND INDIVIDUALS CONNECT TO THE INSPIRATIONAL, IMPOSSIBLE FAITH OF THE PERSECUTED CHURCH, PLEASE VISIT: [HTTPS://WWW.OPENDOORSUK.ORG/ACT/WORLD-WATCH-LIST-RESOURCES/](https://www.opendoorsuk.org/act/world-watch-list-resources/)

Some Sad News...

Many of you will have known Barry Lester. We are sad to inform you that Barry passed away last week.

Please keep Penny, Richard, and the rest of the family in your thoughts and prayers.

Details of his funeral will follow in due course.