

# Connected

Sunday 21st January 2024

3rd Sunday Of Epiphany

## Sermon Snippets

### Christ Church *Colossians 1: 21-29*



#### ***"Present Everyone Fully Mature In Christ"***

Father God, I wonder how I managed to exist without the knowledge of Your parenthood and Your loving care. But now I am Your son, I am adopted in Your family, and I can never be alone 'cause, Father God, You're there beside me.

I will sing Your praises, I will sing Your praises, I will sing Your praises for evermore.  
I will sing Your praises, I will sing Your praises, I will sing Your praises for evermore.

### Emmanuel *2 Corinthians 5: 14-21*

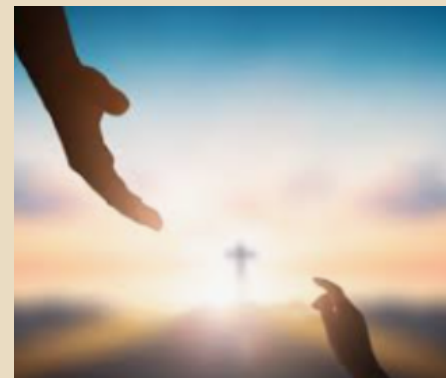
*"All this is from God, who reconciled us to himself through Christ..." (2 Corinthians 5 v 18)*

*This is forming part of our "Verse for the Year".*

*If we have lived as Christians for any length of time, it can seem quite natural to us to have God in our lives. However, if we take a step back for a moment and consider God's supreme holiness, to be reconciled with Him is amazing.*

*Do come along to see how extraordinary this is!*

*...and, also, we start to think about our own role now we are part of God's family; which is to "embody" this very message of reconciliation. Now that is quite a call to live up to!*



Sunday 28<sup>th</sup> January at 4pm  
St Andrew's Church, Banwell  
BS29 6EA

**Deanery Service of Light**

*Celebrating all  
that Jesus is  
doing with us.*

### Deanery Service Of Light 2024

This year our Deanery Service of Light is being held on **Sunday 28<sup>th</sup> January at 4pm** at St Andrew's Church in Banwell.

During the service a Deanery Candle for the year will be given to a representative of each church.

Why not come along next Sunday?

# Prayer Pointers

Pray for those NEAR to you and those FAR AWAY - that they may be encouraged and guided by the love of God and supported by those doing His work...

WEATHER: Aftermath of floods on family homes, businesses, and environmental pollution. Global devastation due to lack of rain on growing crops and safe drinking water supplies.

CONFLICT: Knife crime - those carrying a blade or threatened, injured, or killed by the use of a knife. Middle East conflict - leaders, combatants, victims, and refugees in Gaza and Israel.

COMMUNITY: Homelessness, sleeping rough, or living in temporary accommodation. Also agencies providing practical support and guidance. Plus those worldwide whose homes have been destroyed by conflict or natural disasters.

As the new ALPHA COURSE begins, pray for all who will be taking part and ask that each person may be touched by the knowledge and love of God over the coming weeks.

INEQUALITY: Those able to earn more in a week than most people can earn in a year. May those who have plenty be willing to give to those who do not have enough.

FAITH: Church family of Emmanuel & Christ Church - especially our Vicar, Curate, and Readers plus all who work so hard to support and encourage us. Nearby churches of all denominations and work of Churches Together in our town.

---

## Contact Details

**Rev. Tom Webber** (Day Off - Tuesday)  
t: (01934) 709343  
e: vicar@ccwsm.org.uk

**Rev. Larissa Trust** (Day Off - Tuesday)  
t: 07379 754372  
e: curate@ccwsm.org.uk

**Church Office** (09:30-12:30 Mon-Fri)  
t: (01934) 641016  
e: office@ccwsm.org.uk  
w: www.ccwsm.org.uk

# What's On This Week

## Monday 22nd January

Ladies Together at 2:30pm in The Spire Centre  
Bereavement Course at 7pm in The Spire Centre

## Tuesday 23rd January

Parish Prayers at 9:30am at Emmanuel  
The Beacon at 12noon at Emmanuel

## Wednesday 24th January

Seedlings Toddler Group at 10:15am at Christ Church  
Alpha Course at 2pm in The Spire Centre

## Thursday 25th January

Craft & Chat at 2:30pm in The Spire Centre  
Welcome Group at 2:30pm at Emmanuel

## Saturday 27th January

Men's Breakfast at 8:30am at Christ Church

## Sunday 28th January

Deanery Service Of Light at 4pm in Banwell  
(see front page for more information)

## Notices

### *Verse For The Year Bookmarks*

There will be a handful of 'Verse For The Year' bookmarks available at the back of both churches on Sunday for anyone who would like one. If these all go but you would like one, please contact Emma in the Church Office as more can be printed.

### *Verse For The Week*

" Once you were alienated from God and were enemies in your minds because of your evil behaviour. But now he has reconciled you by Christ's physical body through death to present you holy in his sight, without blemish and free from accusation - if you continue in your faith, established and firm, and do not move from the hope held out in the gospel. "

*Colossians 1: 21-23a*

---

## *Watch the Morning Service*

at [www.ccwsm.org.uk](http://www.ccwsm.org.uk)

Go to the 'Church Life' menu and click on the 'Sunday Services' page

---

# Coffee after the Service...

## EPIPHANY CAROL SERVICE

A warm invitation to the  
Epiphany Carol Service  
at Wells Cathedral  
Sunday 21st January  
at 3pm  
(followed by refreshments)

This is a beautiful service  
of readings and music for  
Epiphany and was much  
enjoyed by those who  
have attended before.



*Julie*

### **Some Sad News...**

Many of you will have known  
Margaret Young.

We are sad to inform you that Margaret  
passed away recently.

Please keep the family in your  
thoughts and prayers.

Details of her funeral will follow in due course.

## **LOST PROPERTY**

We managed to find homes for some of  
our lost property at Christ Church last  
Sunday but we still have a number of  
items unclaimed including several pairs of  
gloves, hats, glasses, Bibles, & jewellery!

All items will be  
displayed in the foyer  
this coming Sunday -  
please do have a look  
on your way in or  
out to see if any  
items are yours!



## **Men's Breakfast**

**Saturday 27th January  
8:30am-10am**

Bacon butties, toast, and drinks...  
then "A scientist looks at some of life's  
problems" (Paul Sodzi will be  
interviewing Terry Baillie) - Cost £3



If you would like to attend, please add your  
name to the sign-up sheet at the back of  
church (available at both churches)

## **Rooms To Let**

Fully furnished first-floor lodgings available in Weston comprising  
three private rooms with new fully fitted kitchen, spacious living  
room, and double bedroom. Bathroom shared with the owner of the  
property. Ideal for mature professional female or a couple. Includes  
WiFi and a parking bay. Smoking not permitted. Rent £650 pcm  
fully inclusive of bills - no extra or hidden charges.

If you, or anyone you know, is looking for a place to rent, please  
speak to Dina at Emmanuel or contact Emma in the Church Office.

